



SLP COLOURTONE INTEGRAL COLOUR CHART

SNOW	MARSHMALLOW	PLATINUM	NIGHT WHITE	SILVER
LAGOON	SLATE	SMOKE	GHOST GREY	GRAPHITE
IRON	VOLCANIC ASH	MIDNIGHT	CHARCOAL	JET BLACK
CAMEL	BISCUIT	MILK CHOCOLATE	CHOCOLATE	DARK CHOCOLATE
SAFFRON	CITRUS	PISTACHIO	LIGHT OLIVE	OLIVE
CLAY	TARRAGON	LIGHT BUFF	FYLDE BUFF	MOONSTONE
CORAL	ROSE	DUSK	BLUSH	MOCHA
CARAMEL	LIGHT TERRACOTTA	TERRACOTTA	BRICK RED	LAVA
BLUE	GREEN	STRAW	SMART ORANGE	DEEP RED

The colours shown represent SLP Colourtone's Integral colour with a natural unsealed finish in a standard concrete or mortar made using a mid grey Portland cement. The final colour can be influenced by a number of factors. Please refer to the technical data sheet for more information.

www.slpcolourtone.com

enquiries@slpcolourtone.com 01253 857784

Holly Road, Red Marsh Industrial Estate, Thornton Cleveleys, Lancashire, FY5 4HH



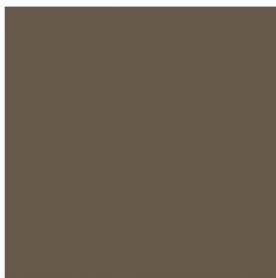
COLOUR MATCHING SERVICE



We also specialise in colour matching to accommodate to a multitude of different colours based on your needs. We would recommend that you order a sample of your colour before ordering the full amount which will give you a strong indication of the actual appearance of the colour. For any enquiries regarding our colour matching please contact our Operations Director, Mathew Holland, by phone on 01253 857784 or email - Mathew.Holland@slpcolourtone.com

COLOUR INSPIRED BY NATURE ... MATCHED BY COLOURTONE

The images of the colours are for illustrative purposes only. We have made every effort to display the colours as accurately as electronic media will allow. However, we cannot guarantee an exact colour match of the on-screen colour to the colours of the actual product, and the colours herein should not be relied on as such. Colours may vary depending on your screen settings and resolution. We recommend that you order a sample before ordering. This will give you a stronger indication of the appearance of the actual colour, which can be affected by the cement and sand used and the texture of the surface.



SLP Colourtone is a trading name of Sea and Land Projects Limited
Sea and Land Projects Limited Registered Office: Central House, 20 Central Avenue,
St Andrews Business Park, Norwich, NR7 0HR